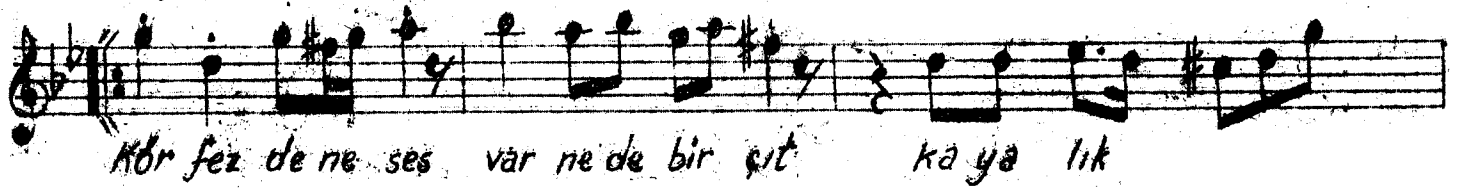
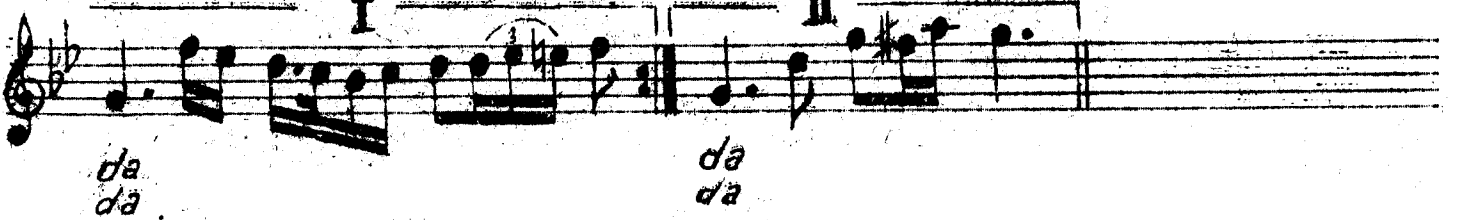
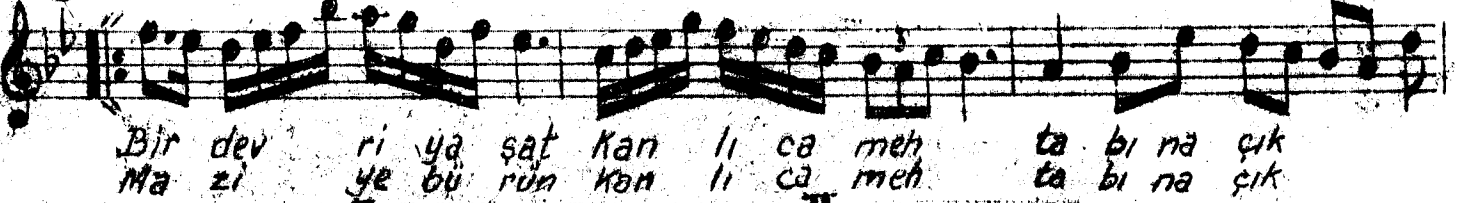
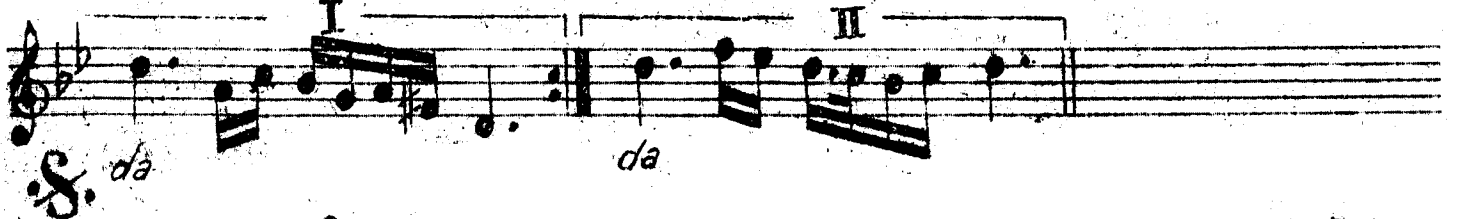
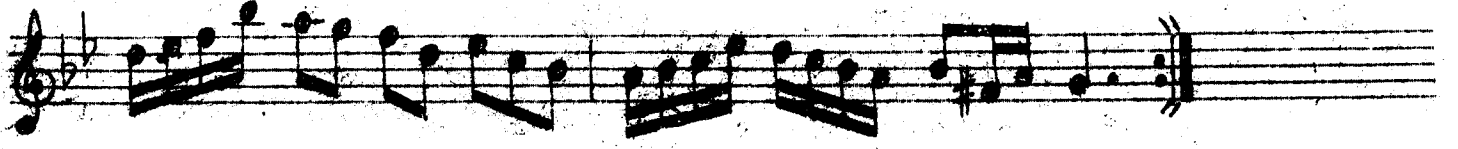


NIHAVEND
(Kanlıca koyunda)

Güfte: M. Nafiz İrmak
Beste: Muzaffer Birtan

AKSAK



FECRİN BÜTÜN ESARİ PARILDARKEN AÇIKDA
BİR DEVRİ YAŞAT KANLICA MEHTABINA ÇIKDA
KÖRFEZDE NE SES VAR, NE DE BİR ÇIT KAYALIKDA
MAZİYE BÜRÜN, KANLICA MEHTABINA ÇIKDA

DALGIN SUYUN AKSİNDEKİ ENDAMINI SEYRET
KARŞINDA SOLAN BİR GÜNÜN AKŞAMINI SEYRET
AŞIKLARININ KOYDA SERENCÂMINI SEYRET
HER DEVRİ YAŞAT KANLICA MEHTABINA ÇIKDA